

UW LINEAIR SPECIALIST

Voor iedere industriële toepassing
een individuele oplossing

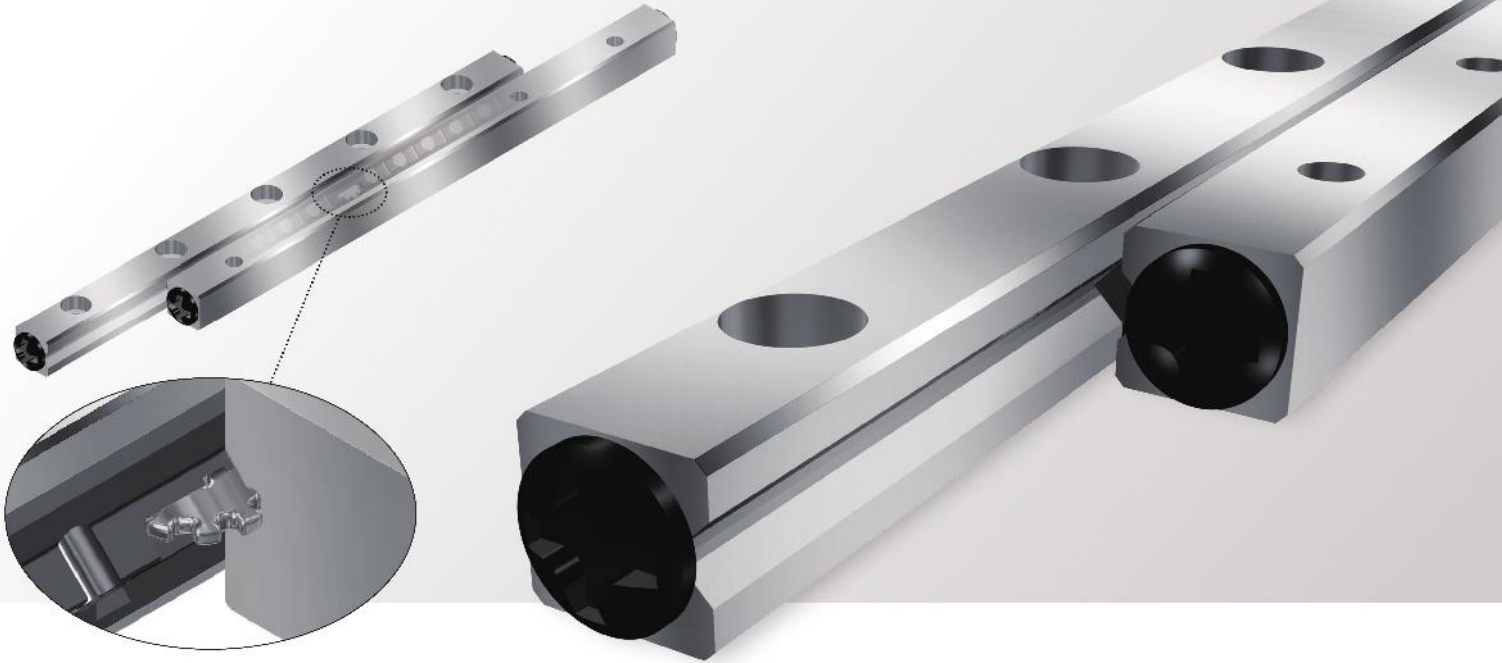


www.lmsystems.nl

Nederland | + 31 (0)318 55 46 15 | info@thk.nl
België | + 32 (0)2 252 4745 | info@thk.be



Cross-Roller Guide with Cage Alignment System **VRG**



Adopts a rack and pinion system

Prevents cage misalignment

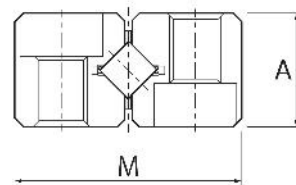
Long life and high rigidity

Interchangeable mounting dimensions

Adopts a proprietary rack and pinion system to prevent ball cage misalignment and achieve stable motion.

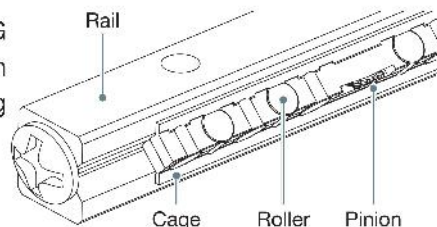
Features more rollers than its predecessor, the Model VR, and achieves a high basic load rating.

Possesses the same mounting dimensions as the Model VR.



■ Structure

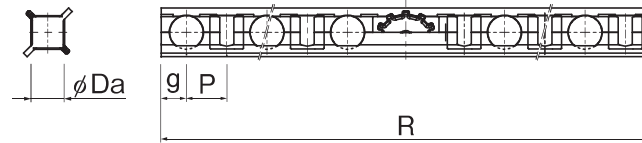
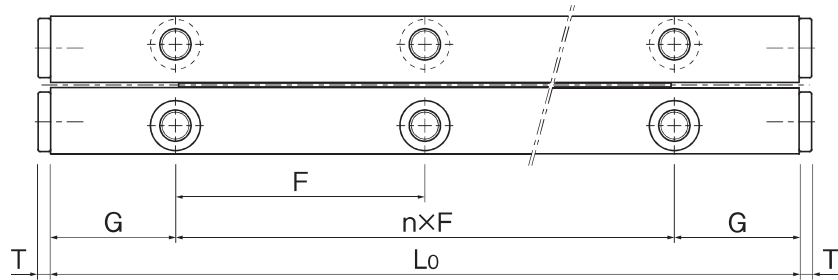
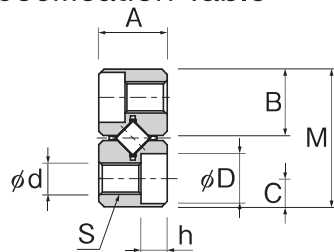
Similar to the VR, the VRG achieves light, smooth motion by not recirculating the rolling elements.



■ Lineup

| Model | Rail length (mm) |
|-------|-------------------------|
| VRG2M | 30, 45, 60, 75, 90, 105 |
| VRG3M | 50, 75, 100, 125, 150 |
| VRG4M | 80, 120, 160, 200 |

■ Specification Table

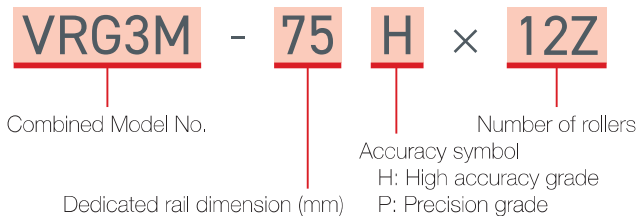


Unit: mm

| Model | Max. stroke | Main dimensions | | | | | | | | | | | | | | Permissible preload δ (μm) | Basic load rating | | Weight/ 1 set (kg) | | | | |
|---------------|-------------|---------------------|-----|-----|------|---------------------|------|-----|----|------|-----|-----|-----|---|-------|--|-------------------|-----------|--------------------------|------------------------|------|-------|-------|
| | | Combined dimensions | | | | Mounting dimensions | | | | | | | | | | | Rollers Z | C (kN) | | C ₀ (kN) | | | |
| M | A | L ₀ | nxF | G | B | C | S | d | D | h | T | Da | R | g | P | | | | | | | | |
| VRG2M-30×6Z | 13 | 12 | 6 | 30 | 1×15 | 7.5 | 5.6 | 2.5 | M3 | 2.55 | 4.4 | 2 | 1.5 | 2 | 21.1 | 1.65 | 2.5 | 6 | -3 | 1.15 | 1.63 | 0.029 | |
| VRG2M-45×12Z | 12 | | | 45 | 2×15 | | | | | | | | | | 36.1 | | | | | 12 | 1.98 | 3.26 | 0.044 |
| VRG2M-60×16Z | 22 | | | 60 | 3×15 | | | | | | | | | | 46.1 | | | | | 16 | 2.48 | 4.35 | 0.058 |
| VRG2M-75×22Z | 22 | | | 75 | 4×15 | | | | | | | | | | 61.1 | | | | | 22 | 3.18 | 5.98 | 0.072 |
| VRG2M-90×24Z | 42 | | | 90 | 5×15 | | | | | | | | | | 66.1 | | | | | 24 | 3.41 | 6.52 | 0.086 |
| VRG2M-105×30Z | 42 | | | 105 | 6×15 | | | | | | | | | | 81.1 | | | | | 30 | 4.06 | 8.15 | 0.100 |
| VRG3M-50×8Z | 15 | 18 | 8 | 50 | 1×25 | 12.5 | 8.6 | 3.5 | M4 | 3.3 | 6 | 3.1 | 2 | 3 | 38.7 | 2.5 | 3.7 | 8 | -4 | 4.27 | 6.61 | 0.099 | |
| VRG3M-75×12Z | 35 | | | 75 | 2×25 | | | | | | | | | | 53.5 | | | | | 12 | 5.88 | 9.92 | 0.147 |
| VRG3M-100×18Z | 41 | | | 100 | 3×25 | | | | | | | | | | 75.7 | | | | | 18 | 8.07 | 14.9 | 0.196 |
| VRG3M-125×22Z | 61 | | | 125 | 4×25 | | | | | | | | | | 90.5 | | | | | 22 | 9.44 | 18.2 | 0.243 |
| VRG3M-150×28Z | 66 | | | 150 | 5×25 | | | | | | | | | | 112.7 | | | | | 28 | 11.4 | 23.1 | 0.292 |
| VRG4M-80×10Z | 34 | 22 | 11 | 80 | 1×40 | 20 | 10.6 | 4.5 | M5 | 4.3 | 8 | 4.2 | 2 | 4 | 58.3 | 3 | 4.8 | 10 | -5 | 10.6 | 17.3 | 0.269 | |
| VRG4M-120×16Z | 57 | | | 120 | 2×40 | | | | | | | | | | 87.1 | | | | | 16 | 15.3 | 27.6 | 0.401 |
| VRG4M-160×22Z | 78 | | | 160 | 3×40 | | | | | | | | | | 115.9 | | | | | 22 | 19.6 | 38.0 | 0.533 |
| VRG4M-200×28Z | 101 | | | 200 | 4×40 | | | | | | | | | | 144.7 | | | | | 28 | 23.6 | 48.4 | 0.665 |

■ Model Number Coding

Select an option



Note: "1 set" for the above models indicates a single combination of 4 rails and 2 cages.

An "M" in the model number indicates the rail material is stainless steel.

THK CO., LTD.

Headquarters 2-12-10 Shibaura, Minato-ku, Tokyo 108-8506 Japan

International Sales Department Phone: +81-3-5730-3860

www.thk.com



Gildetrom 25 3905 TB Veenendaal **Nederland**
T: + 31 (0)318 - 554615 | E: info@thk.nl
www.lmsystems.nl

Leuvensesteenweg 613 B-1930 Zaventem **België**
T: + 32 (0)2 252 4745 | E: info@thk.be
www.thk.be